

searug.org

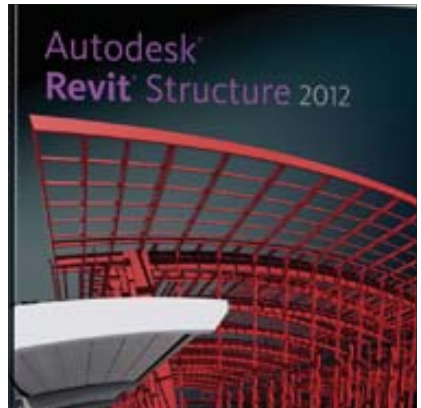
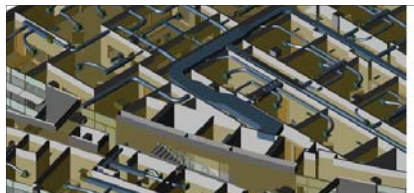
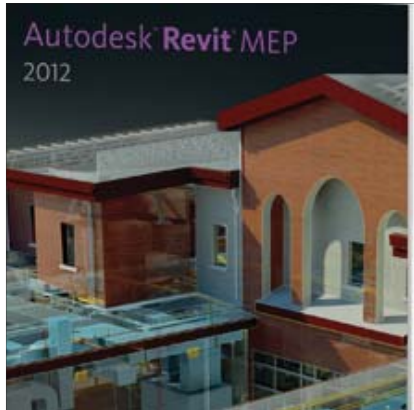
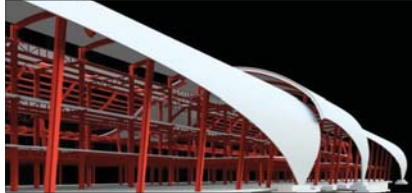
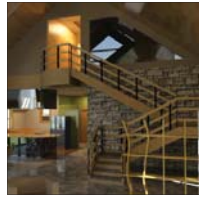


# SeaRUG

Seattle Revit User Group

An Affiliated AUGI Chapter

## Seattle Revit User Group 2012 Sponsorship Package



## 2012 SeaRUG Sponsorship Package



Welcome to SeaRUG

To Our Future Partner,

The [Seattle Revit Users Group](#) appreciates your interest in becoming a sponsoring partner to the Northwest's largest Revit & BIM user group. We are a learning and networking resource with over 1000 registered members that represent more than 50 local area A/E/C firms and educational institutions.

As the Puget Sound's leading forum on BIM use, education and application, SeaRUG meetings are designed for A/E/C professionals and students that use, or are interested in, Autodesk Revit products, including [Revit Architecture](#), [Revit MEP](#), and [Revit Structure](#). These real-world Revit/BIM-centric presentations by industry peers and educating professionals spark ideas, educate through honest experience, and leverage further discovery and application of Revit and BIM.

SeaRUG meetings are held once a month in the Microsoft Auditorium at the [Seattle Public Library](#), where our meeting attendance can range between 80 and 120 people. We provide the lunch, and our meeting agenda consists of general announcements, sponsor recognition, a 1-hour Revit/BIM-centric presentation, followed by open networking.

There are three SeaRUG Sponsorship Partner options available annually:

- Executive Partners – Reserved for Local Autodesk Value Added Reseller's
- Premier Partners – Businesses and/or Educational Institutions
- Associate Partners – A/E/C Firms, Owners/Developers, Businesses and Educational Institutions

Please see the Sponsorship Options page for benefit details and contribution amounts.

Your contributions help with the operating costs of monthly meetings, website maintenance, and special events. This ensures a free and collaborative learning environment for our members, both in-person and online.

Thank you for your time, and we look forward to working with you.

Sincerely,

A handwritten signature in blue ink, appearing to read 'Rob Bendix', written in a cursive style.

Rob Bendix  
SeaRUG President  
president@searug.org

# 2012 SeaRUG Sponsorship Package



## SeaRUG Sponsorship Options

### Executive Partners

- Local Autodesk VAR's – 3 Preferred
- \$3200 Annually
- Exclusive host of two (2) meetings
- Prepare and present the Feature Presentation
  - Revit-centric Feature Presentation - requires SeaRUG Board approval

### Premier Partners

- Businesses or Educational Institutions – 4 Preferred
- \$1600 Annually
- Exclusive host of one (1) meeting
- Option to prepare and present the Feature Presentation, or have SeaRUG provided the presentation
  - Revit-centric Feature Presentation - requires SeaRUG Board approval

### Associate Partners

- A/E/C Firms, Owners/Developers, Businesses, and Educational Institutions
- Recognized supporter of SeaRUG and its members
- \$350 Annually

Benefit Description for the Calendar Year	Associate	Premier	Executive
Company Logo displayed near the top of the SeaRUG.org home page with web-link			X
Priority Select Meeting Scheduling			X
Sponsor of the Month recognition on SeaRUG.org home page with web-link for the entire host month		X	X
Recognition on SeaRUG.org Sponsor Page with Web-link	X	X	X
Recognition on the footer of all email newsletters	X	X	X
Recognition on the meeting Sponsors slide	X	X	X
At Your Hosted SeaRUG meeting:		Premier	Executive
A display table by the entrance/exit for handouts and promotional materials		X	X
One "What's Happening" slide in the opening PPT loop		X	X
10 minutes to address the audience		X	X

### Additional Value Benefits for Sponsors:

- Meetings are recorded, and then posted to SeaRUG for members view
  - Including opening announcements, sponsor recognition, and main presentation
  - Membership base is notified when the meeting recording is posted
- SeaRUG Board handles all meeting arrangements – facility, lunch and RSVP's
- Sponsor of the Month recognition on the SeaRUG home page
- Representation for the year on SeaRUG.org, emails, and newsletters

# 2012 SeaRUG Sponsorship Package



## SeaRUG Sponsor Commitment Form

By selecting the Partner Contribution Level below, I/We hereby commit to financial sponsorship and programming contribution (if required by level) of the Seattle Revit User Group for 2012.

- \_\_\_\_\_ Executive Partner      \$3200
- \_\_\_\_\_ Premier Partner      \$1600
- \_\_\_\_\_ Associate Partners      \$350

### For Executive and Premier Partners:

Meeting dates for 2012: Feb 15, Mar 21, Apr 18, May 16, Jun 20, Jul 18, Aug 15, Sep 19, Oct 17, and Nov 14. Please list the date(s) you wish to host, in order of preference. Scheduling is determined by the order in which the commitment letters are received by SeaRUG. Although, Executive Partners do receive priority scheduling.

- 1. \_\_\_\_\_
- 2. \_\_\_\_\_
- 3. \_\_\_\_\_
- 4. \_\_\_\_\_

### Sponsoring Partner Information (please print clearly):

Company or Organization (as recognized on SeaRUG.org):			
Mailing Address:	City:	State:	Zip:
Company Phone No:	Company Website:		

### Sponsoring Partner Contact Information (please print clearly):

Contact Name:	Title:
Phone:	Email:
Signature:	Date:

Please complete this form and make a copy for your records. Submit Sponsor Commitment Form via mail (below) or email to [sponsors@searug.org](mailto:sponsors@searug.org). Submit a check (payable to *The Seattle Revit User Group, Inc.*) and W9 to:

Seattle Revit User Group  
PO Box 33912  
Seattle, WA 98133

Note: Credit Card payment option is available upon request

We thank you for supporting SeaRUG and development of Revit and BIM in and around the A/E/C community.