

searug.org

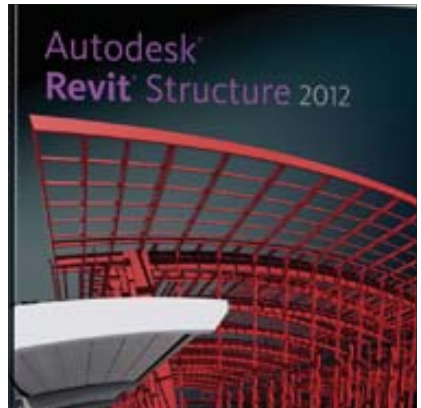
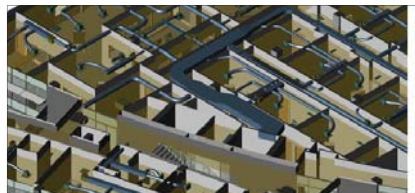
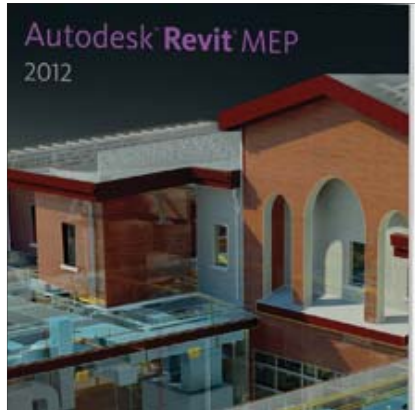
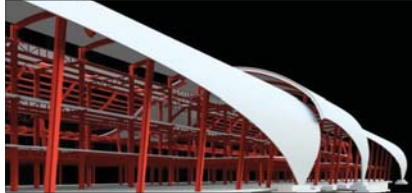
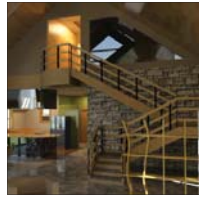
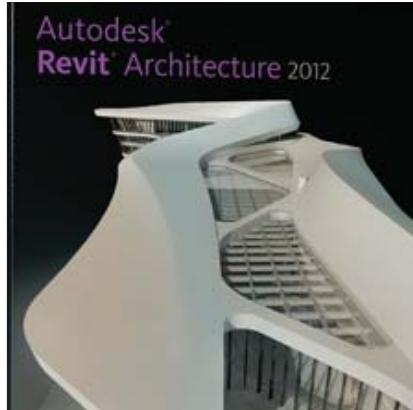


# SeaRUG

Seattle Revit User Group

An Affiliated AUGI Chapter

## Seattle Revit User Group 2012 Sponsorship Package



## 2012 SeaRUG Sponsorship Package



Welcome to SeaRUG

To Our Future Associate Partner,

As a valued member of the [Seattle Revit Users Group](#) we want to inquire if you or your organization is interested in becoming a sponsoring partner to the Northwest's largest Revit & BIM user group. We are a learning and networking resource with over 1100 registered members that represent more than 50 local area A/E/C firms and educational institutions.

As the Puget Sound's leading forum on BIM use, education and application, SeaRUG meetings are designed for A/E/C professionals and students that use, or are interested in, Autodesk Revit products, including [Revit Architecture](#), [Revit MEP](#), and [Revit Structure](#). These real-world Revit/BIM-centric presentations by industry peers and educating professionals spark ideas, educate through honest experience, and leverage further discovery and application of Revit and BIM.

SeaRUG meetings are held once a month in the Microsoft Auditorium at the [Seattle Public Library](#), where our meeting attendance can range between 80 and 120 people. We provide the lunch, and our meeting agenda consists of general announcements, sponsor recognition, a 1-hour Revit/BIM-centric presentation, followed by open networking.

Associate Partners are comprised of A/E/C Firms, Owners/Developers, Businesses and Educational Institutions that support the efforts the Seattle Revit User Group in the AEC community. In turn; SeaRUG will recognize our Associate Partners as supporters throughout the sponsorship year on our website, in our meetings (live and archived), and on our email newsletters.

Your contributions help with the operating costs of monthly meetings, website maintenance, and special events. This ensures a free and collaborative learning environment for our members, both in-person and online.

Thank you for your time, and we look forward to working with you.

Sincerely,

A handwritten signature in blue ink, appearing to read 'Rob Bendix', written in a cursive style.

Rob Bendix  
SeaRUG President  
president@searug.org

## 2012 SeaRUG Sponsorship Package



### SeaRUG Sponsor Commitment Form

#### For a \$350 Annual Contribution

- Recognized supporter of SeaRUG and its members
- Organization name with web-link on the SeaRUG Sponsor Page for the year
- Representation for the year on SeaRUG.org, emails, and newsletters
- Acknowledged on the Sponsors slide at live meetings, and in the posted recordings

\_\_\_\_\_ YES, I/We hereby commit to become an Associate Partner of SeaRUG for 2012!

#### Associate Partner Information (please print clearly):

Individual Name, Company or Organization (as recognized on SeaRUG.org):			
Mailing Address:	City:	State:	Zip:
Company Phone No:	Company Website:		

#### Sponsoring Partner Contact Information (please print clearly):

Contact Name:	Title:
Phone:	Email:
Signature:	Date:

Please complete this form and make a copy for your records. Submit Sponsor Commitment Form via mail (below) or email to [sponsors@searug.org](mailto:sponsors@searug.org). Submit a check (payable to *The Seattle Revit User Group, Inc.*) and W9 to:

Seattle Revit User Group  
PO Box 33912  
Seattle, WA 98133

Note: Credit Card payment option is available upon request

We thank you for supporting SeaRUG and development of Revit and BIM in and around the A/E/C community.